



**BATTERY HANDLING SYSTEMS**

## Tech Tip # TSB05-005

Issue Date: January 2007

### **Trimming Powered Rollers**

Models Affected: All Man-on-Board Extractors

#### **Description:**

Over time the plastic coating on powered rollers of the battery extractor can be forced toward the ends of the rollers. This situation is due to the weight of the batteries causing the plastic to extrude, much like rolling a piece of clay between your hand and a table. This will result in the plastic becoming longer until it eventually comes in contact with the sides of the roller bed. This may lead to the rollers becoming more difficult to turn or even possibly binding the powered rollers to the point of stopping them from turning at all, at which point damage to components may occur.

#### **Recommendation:**

The plastic coating on the powered rollers may need to be periodically trimmed when performing preventative maintenance on the battery extractor. This is a fairly quick and easy procedure for two people and is similar to using a wood lathe.

#### **Procedure:**

Rest the side of the trimming tool (BHS part# 43080100) flat against the side of the roller bed and on the head of the bolt going through the roller bed holding the powered roller bearing (see fig. 1). Have an experienced operator turn the powered roller being trimmed **slowly** toward you while applying steady downward pressure to the tool to remove the excess plastic coating. This will create an approximate 45 degree chamfer when complete (see fig. 2). Repeat this procedure for any remaining powered rollers which require trimming.

CAUTION: Do not let the tool catch on the steel portion of the powered roller. This could result in damage to the tool and/or personal injury.

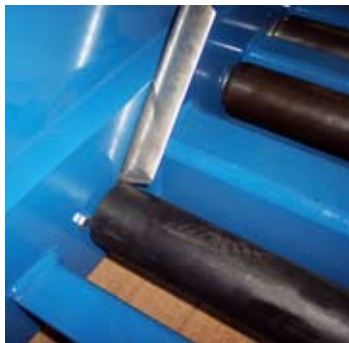


Figure 1

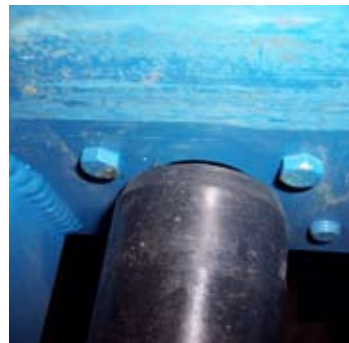


Figure 2

**For more information call**

# **877-BHS-4YOU.**

**for the servicing dealer near you.**